

Doctor Magic

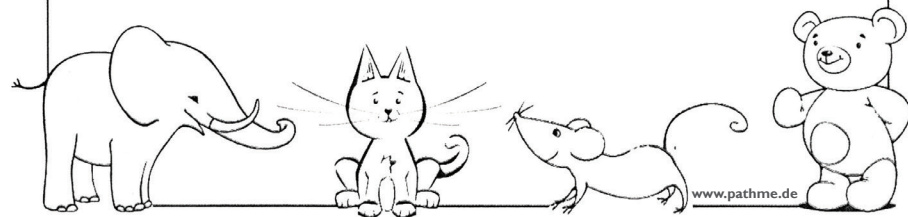
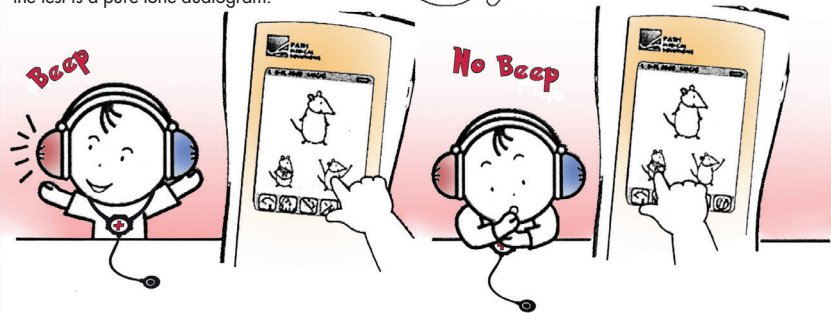
Dear parents,

when doing the MAGIC Audiogram, the child is no longer the patient but the doctor and has to help the animals!

The task is to examine the animals and decide when they can talk (listen for beep tones) or whether they should wear a scarf as they cannot beep. Three steps to do:

1. Pick a patient (animal). They are waiting in the waiting room for you to examine.
2. Press the belly of the animal and listen.
3. Did you hear a tone?
 - Yes! Press the happy animal. This animal can talk.
 - No! Prescribe a scarf as remedy! Press the animal wearing a scarf.

After all animals (of one frequency group) are treated, another group of animals might show up in the waitingroom - continue to examine! The test takes about 2 minutes per ear. The result of the test is a pure tone audiogram.



Simple game instruction sheet - free download!

AUDIOMETRY MODULES ARE AVAILABLE AS STANDARD OR UPGRADE ON THESE PLATFORMS:



SENTIERO
// ADVANCED



SENTIERO
// DIAGNOSTIC



SENTIERO
// SCREENING



SENTI
// HANDHELD



SENTIERO
// TYMP SCREENING



SENTIERO
// TYMP DIAGNOSTIC



SENTI
// DESKTOP

Made in Germany



PATH MEDICAL GmbH

Landsberger Straße 65
82110 Germering / Germany

Tel +49 89 800 76 502 / Fax +49 89 800 76 503
info@pathme.de / www.pathme.de

MAKE AUDIOMETRY FUN AGAIN!

PLAY AND PICTURE AUDIOMETRY & CARTOONS WITH SENTI & SENTIERO.



THE SOUND OF SCIENCE.



PURE TONE AUDIOMETRY

THE CHILD IS THE DOCTOR!

NOAH
COMPATIBLE



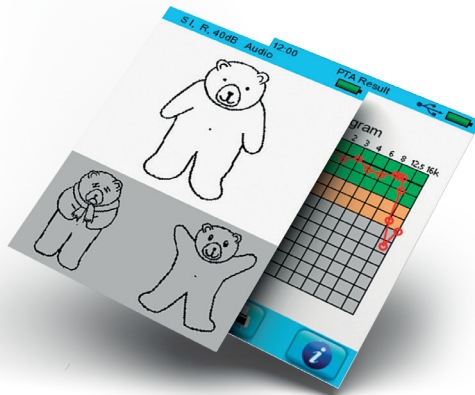
MAGIC IS AVAILABLE IN
SCREENING MODE AND
DIAGNOSTIC MODE.

TELL THE STORY OF DR. MAGIC

and make the child forget that it is the patient. Let the child be the doctor! Benefit from psychologically researched visual amplifiers to receive reliable results while having fun.

THE INTERACTIVE ALTERNATIVE TO CONVENTIONAL AUDIOMETRY!

Pure-tone thresholds are determined by selecting icons (animals) from a touchscreen that „produces“ sounds with different frequencies and sound pressure levels. Concentration is tracked automatically during the test.



The test is controlled by the child, with the audiologist present offering guidance during this enjoyable and interactive test! Let's work together - as a team.

INTERACTIVE, ON-SCREEN CARTOONS ARE AVAILABLE FOR ALL OAE AND TYMPANOMETRY TESTS!



Engage the younger patients in a game where they pretend to be a pilot. Pilots are calm and concentrated to navigate. To support this game, hand over the flight badge (supplied by PATH) before the test and then begin.

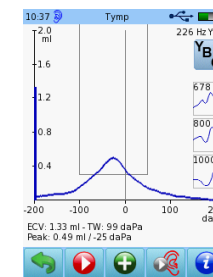
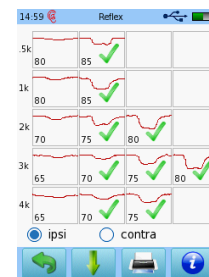
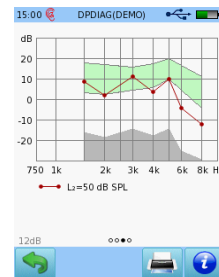
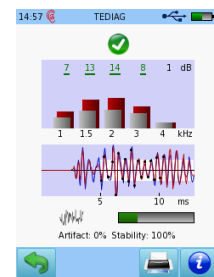
Automatically after the test or manually whilst testing (press the plane symbol) you can review the results. These are ready to print directly to pdf or label or to store in MIRA PC database.

TEOAE

DPOAE

REFLEX

MF TYMP



SPEECH AUDIOMETRY

LIVE & RECORDED SPEECH TESTS, SPONDEES, SIN

Whitepapers are available - scan and read online:



MATCH is an interactive, image based speech intelligibility test using one and two syllable words presented on the colour touch screen. Available in different languages (DE, EN, FR, ES, TR, IT, SL, RU) and speech in noise test ... **it's full 2 channel audiometry!**



Live speech and bone kit available now!

The unique speech test architecture (UST) can include also other tests besides: Spondees for Children (EN), Spondees for Adults (EN), Logaudiometria (ES), Freiburger (DE), Govorni test (SL), Beszéd test (HU), NU-6 (EN), CID W-22 (EN), PBK-50 (EN), CAD (FR), CNC (EN), dichotic tests, contra masking ... Special tests help to detect speech development deficiencies or evolving hearing problems: MAUS (DE), SUN (EN, DE, IT, ES, FR, AR, RU ...).

The brandnew BASD is testing the central auditory processing and won the 1st price from European Phoniatics Hearing Association in 2014.

